

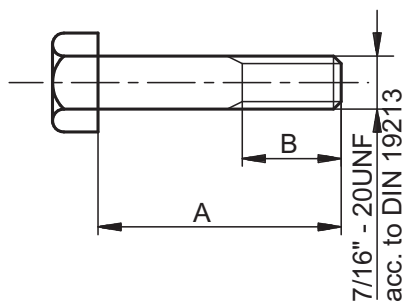


ASSEMBLY EQUIPMENT CATALOGUE

1. VALVES (MANIFOLDS) EQUIPMENT

1.1. Special screw 7/16" - 20 UNF

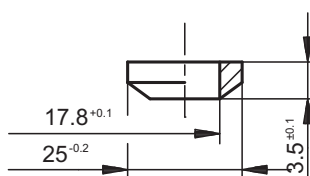
The screw enables to connect the valves (manifolds) MEZ-type and inserts to transmitters of Emerson make and others.



DRAWING No.	DIMENSIONS		MATERIAL
	A	B	
ME1-0369-1	60	25	15HM
ME1-0369-2	60	25	316
ME1-0369-3	16	Thread on the entire length	15HM
ME1-0369-4	16		316
ME1-0369-5	50	25	15HM
ME1-0369-6	50	25	316
ME1-0369-7	90	30	15HM
ME1-0369-8	90	30	316
ME1-0369-9	55	30	15HM
ME1-0369-10	55	30	316
ME1-0369-11	75	30	15HM
ME1-0369-12	75	30	316

1.2. Seal

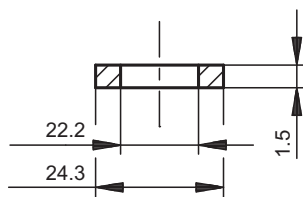
The seal enables to seal the passage between the valve (manifold) and transmitter or insert.



DRAWING No.	MATERIAL
ME1-0148	Teflon

1.3. Seal

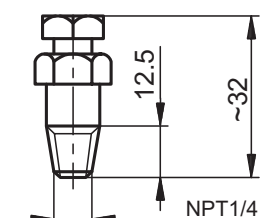
The seal enables to seal the passage between the complete connector and other detail.



DRAWING No.	MATERIAL
ME1-0149-1	1H18N9T

1.4. Deaerating element

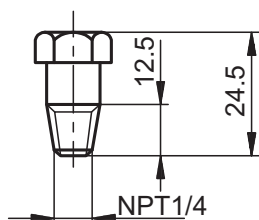
The deaerating element enables to close and deaerate the transmitter measuring chambers.



DRAWING No.	MATERIAL
ME2-0430-1	15HM
ME2-0430-2	1H18N9T

1.5. Hole plug

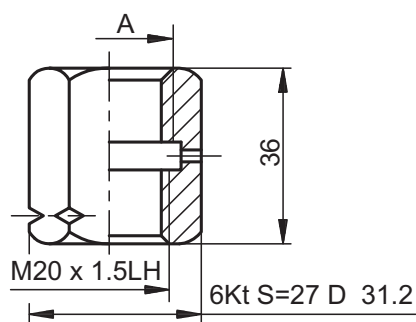
The hole plug (stopper) enables close the transmitter measuring chambers.



DRAWING No.	MATERIAL
ME1-0459-1	15HM
ME1-0459-2	1H18N9T

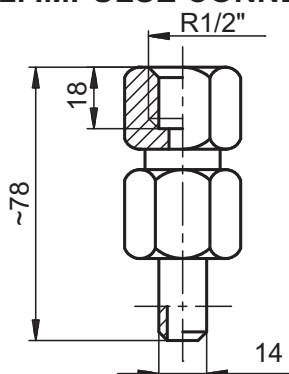
2.6. "Roman" nut

"Roman" nut makes possibly the connection of two manometric ends.



DRAWING No.	DIMENSION A	MATERIAL
ME1-0421-1	M20 x 1.5	15HM
ME1-0421-2	M20 x 1.5	1H18N9T
ME1-0421-3	G1/2"	15HM
ME1-0421-4	G1/2"	1H18N9T
ME1-0421-5	R1/2"	15HM
ME1-0421-6	R1/2"	1H18N9T

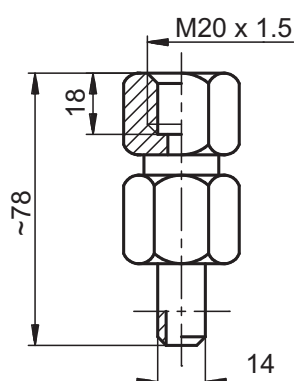
2. IMPULSE CONNECTORS



2.1. Complete connector with thread G1/2"

The complete connector allows to connect the impulse tubes to the measuring instrument with manometric thread G1/2".

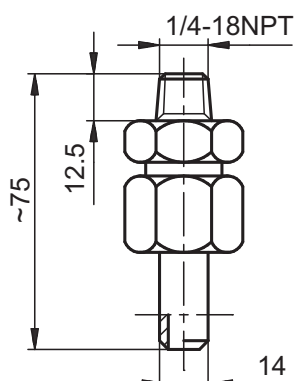
DRAWING No.	MATERIAL	OF ENDS
ME2-0401-1	15HM	ball-end 14
ME2-0401-2	316	ball-end 14
ME2-0401-3	15HM	ball-end 12
ME2-0401-4	316	ball-end 12
ME2-0401-5	15HM	flat-end 14
ME2-0401-6	316	flat-end 14
ME2-0401-7	15HM	clamping ring 14
ME2-0401-8	316	clamping ring 14



2.2. Complete connector with thread M20 x1.5

The complete connector allows to connect the impulse tubes to the measuring instrument with manometric thread M20 x1.5

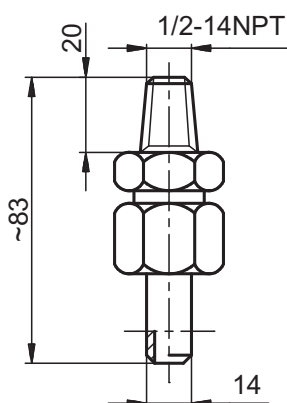
DRAWING No.	MATERIAL	OF ENDS
ME2-0454-1	15HM	ball-end 14
ME2-0454-2	316	ball-end 14
ME2-0454-3	15HM	ball-end 12
ME2-0454-4	316	ball-end 12
ME2-0454-5	15HM	flat-end 14
ME2-0454-6	316	flat-end 14
ME2-0454-7	15HM	clamping ring 14
ME2-0454-8	316	clamping ring 14



2.3. Complete connector with thread 1/4 - 18NPT

The complete connector allows to connect the impulse tubes to the measuring instrument with threaded hole 1/4-18NPT.

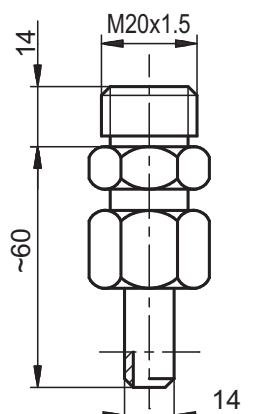
DRAWING No.	MATERIAL	PIPES
ME2-0635-1	15HM	14 for welding
ME2-0635-2	316	14 for welding
ME2-0635-3	15HM	12 for welding
ME2-0635-4	316	12 for welding
ME2-0635-5	15HM	14 clamping ring
ME2-0635-6	316	14 clamping ring
ME2-0635-7	15HM	12 clamping ring
ME2-0635-8	316	12 clamping ring



2.4. Complete connector with thread 1/2 - 14NPT

The complete connector allows to connect the impulse tubes to the measuring instrument with threaded hole 1/2-14NPT.

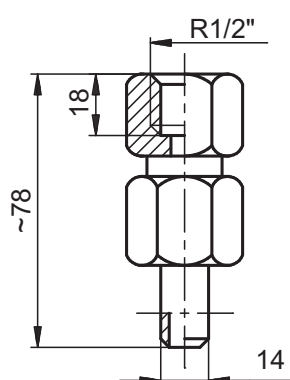
DRAWING No.	MATERIAL	ENDS
ME2-0634-1	15HM	14 for welding
ME2-0634-2	316	14 for welding
ME2-0634-3	15HM	12 for welding
ME2-0634-4	316	12 for welding
ME2-0634-5	15HM	14 clamping ring
ME2-0634-6	316	14 clamping ring
ME2-0634-7	15HM	12 clamping ring
ME2-0634-8	316	12 clamping ring



2.5. Complete connector

The complete connector enables to connect the impulse pipes with the instrumentation.

DRAWING No.	MATERIAL	ENDS
ME2-0458-1	15HM	ball-end 14
ME2-0458-2	316	ball-end 14
ME2-0458-3	15HM	ball-end 12
ME2-0458-4	316	ball-end 12
ME2-0458-5	15HM	flat-end 14
ME2-0458-6	316	flat-end 14
ME2-0458-7	15HM	clamping ring 14
ME2-0458-8	316	clamping ring 14

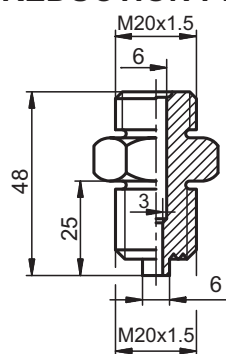


2.6. Complete connector with thread R 1/2"

The complete connector enables to connect the impulse tube for the measuring instrument with manometric thread R 1/2"

DRAWING No.	MATERIAL	ENDS
ME2-0695-1	15HM	ball-end 14
ME2-0695-2	316	ball-end 14
ME2-0695-3	15HM	ball-end 12
ME2-0695-4	316	ball-end 12
ME2-0695-5	15HM	flat-end 14
ME2-0695-6	316	flat-end 14
ME2-0695-7	15HM	clamping ring 14
ME2-0695-8	316	clamping ring 14

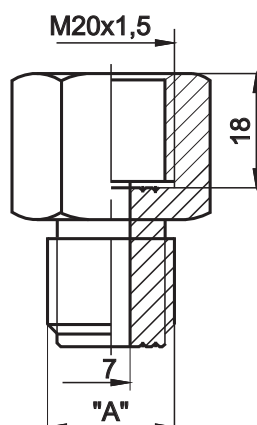
3. REDUCTION PIPES



3.1. Reduction pipe

The reduction pipe enables to connect the measuring instrument with pressure installation.

DRAWING No.	MATERIAL	THREAD "A"
EP1-0945-1	St5	M20x1,5
EP1-0945-2	1H18N9T	M20x1,5
EP1-0945-3	St5	1/2" - 14" NPT
EP1-0945-4	1H18N9T	1/2" - 14" NPT



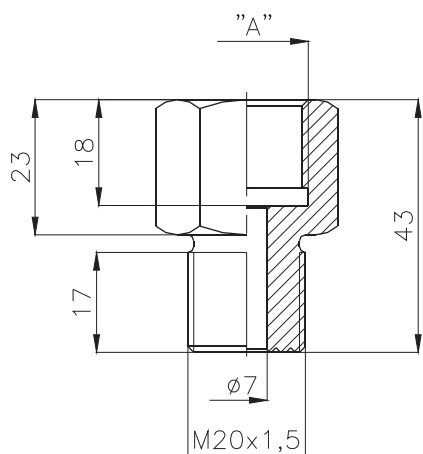
3.2. Reduction pipe

The reduction pipe enables to connect the measuring instrument with pressure installation.

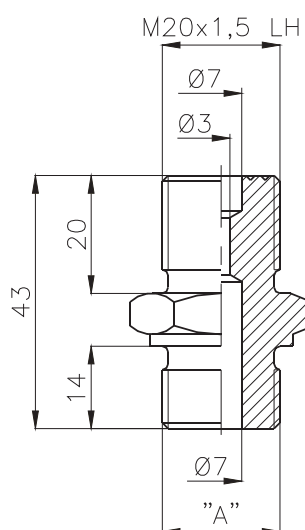
DRAWING No.	MATERIAL	THREAD "A"
ME1-0691-1	15HM	G 1/2
ME1-0691-2	15HM	R 1/2
ME1-0691-3	15HM	1/2" NPT
ME1-0691-4	15HM	1/4" NPT
ME1-0691-5	15HM	M12x1,5
ME1-0691-6	15HM	G 1/4"
ME1-0691-11	316	G 1/2
ME1-0691-12	316	R 1/2
ME1-0691-13	316	1/2" NPT
ME1-0691-14	316	1/4" NPT
ME1-0691-15	316	M12x1,5
ME1-0691-16	316	G 1/4"

3.3. Reduction pipe

The reduction pipe enables to connect the measuring instrument with pressure installation.

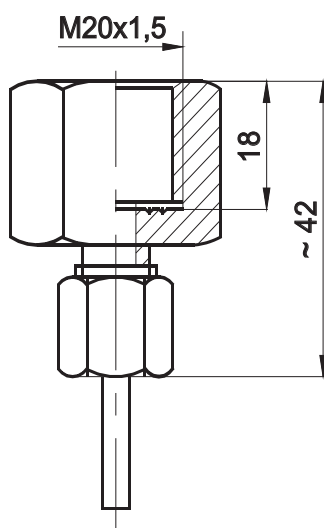


DRAWING No.	MATERIAL	THREAD "A"
ME1-0694-1	15HM	G 1/2
ME1-0694-2	15HM	R 1/2
ME1-0694-3	15HM	1/2" NPT
ME1-0694-4	15HM	1/4" NPT
ME1-0694-5	15HM	M12x1.5
ME1-0694-6	15HM	G 1/4"
ME1-0694-11	1H18N9T	G 1/2
ME1-0694-12	1H18N9T	R 1/2
ME1-0694-13	1H18N9T	1/2" NPT
ME1-0694-14	1H18N9T	1/4" NPT
ME1-0694-15	1H18N9T	M12x1.5
ME1-0694-16	1H18N9T	G 1/4"



4.4 Reduction pipe

DRAWING No.	MATERIAL	THREAD
ME1-0705-1	15HM	R1/2"
ME1-0705-2	1H18N9T	R1/2"



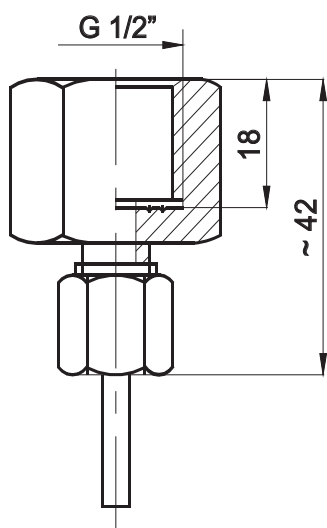
3.5. Reduction pipe

The reduction pipe enables to connect the measuring instrument with pressure installation.

DRAWING No.	MATERIAL	END
ME2-0693-01	Brass	6x1 PE
ME2-0693-02	Brass	6x1 CU
ME2-0693-03	Brass	8x1 PE
ME2-0693-04	Brass	8x1 CU
ME2-0693-11	316	6x1 PE
ME2-0693-12	316	6x1 Stainless steel
ME2-0693-13	316	8x1 PE
ME2-0693-14	316	8x1 Stainless steel

3.6. Reduction pipe

The reduction pipe enables to connect the measuring instrument with pressure installation.



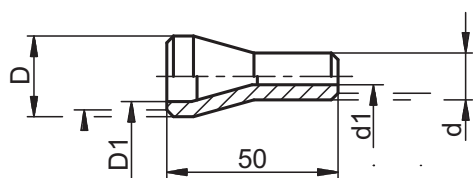
DRAWING No.	MATERIAL	END
ME2-0692-01	Brass	6x1 PE
ME2-0692-02	Brass	6x1 CU
ME2-0692-03	Brass	8x1 PE
ME2-0692-04	Brass	8x1 CU
ME2-0692-05	316	6x1 PE
ME2-0692-06	316	6x1 Stainless steel
ME2-0692-07	316	8x1 PE
ME2-0692-08	316	8x1 Stainless steel

3.7. Reduction pipe

The reduction pipe enables to connect the impulse tubes at different diameters.

One can order different diameters D and d, according to the order (max to 50) for e.g.:

Reduction pipe ME1-...-1
 D=16mm; d=12mm; D1=12mm; d1=8mm



D	16	25	d	12	16
D1	10,2	17	d1	6	10

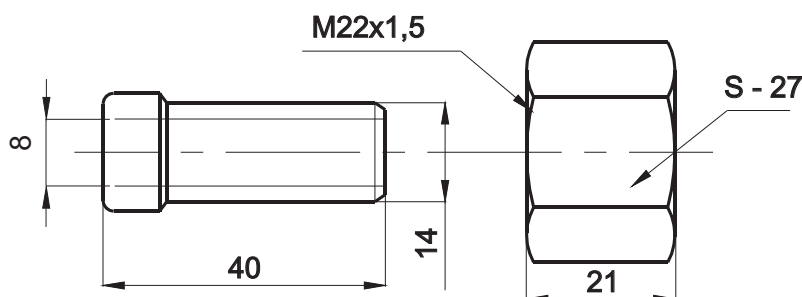
DRAWING No.	MATERIAL
ME1-0690-1	20
ME1-0690-2	15HM
ME1-0690-3	10H2M
ME1-0690-4	1H18N9T
ME1-0690-5	13HMF

4. IMPULSE ENDS

4.1. Ball-end

4.2. Nut

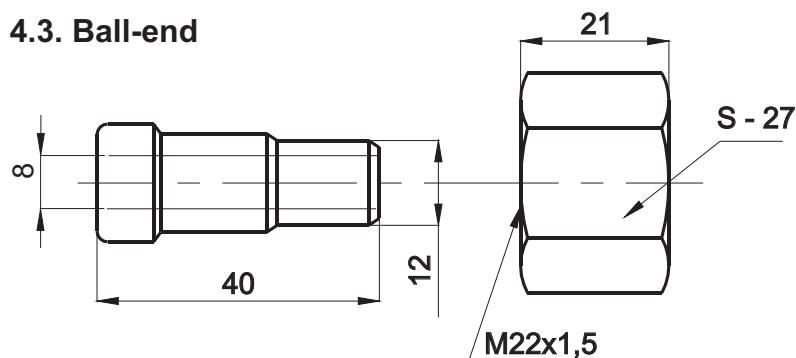
The ball-end enables to connect installation with transmitter by welding method.



BALL-END 14	
DRAWING No.	MATERIAL
EP1-0886-2	15 HM
EP1-0886-4	316
EP1-0886-5	13 HMF

NUT M22x1,5	
DRAWING No.	MATERIAL
EP1-1100-2	15 HM
EP1-1100-1	316
EP1-1100-3	13 HMF

4.3. Ball-end



BALL-END 14	
DRAWING No.	MATERIAL
ME1-0388-1	15 HM
ME1-0388-2	316
ME1-0388-5	13 HMF

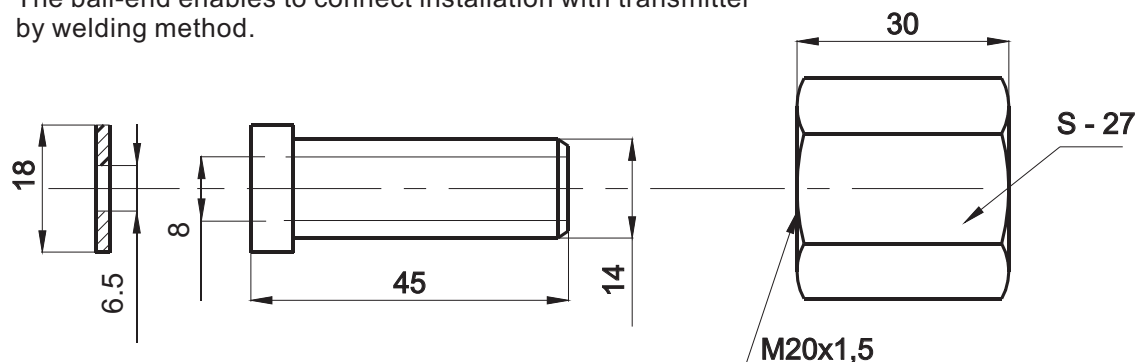
NUT M22x1,5	
DRAWING No.	MATERIAL
EP1-1100-2	15 HM
EP1-1100-1	316
EP1-1100-3	13 HMF

4.4. Washer

4.5. Flat-end

4.6. Nut

The ball-end enables to connect installation with transmitter by welding method.



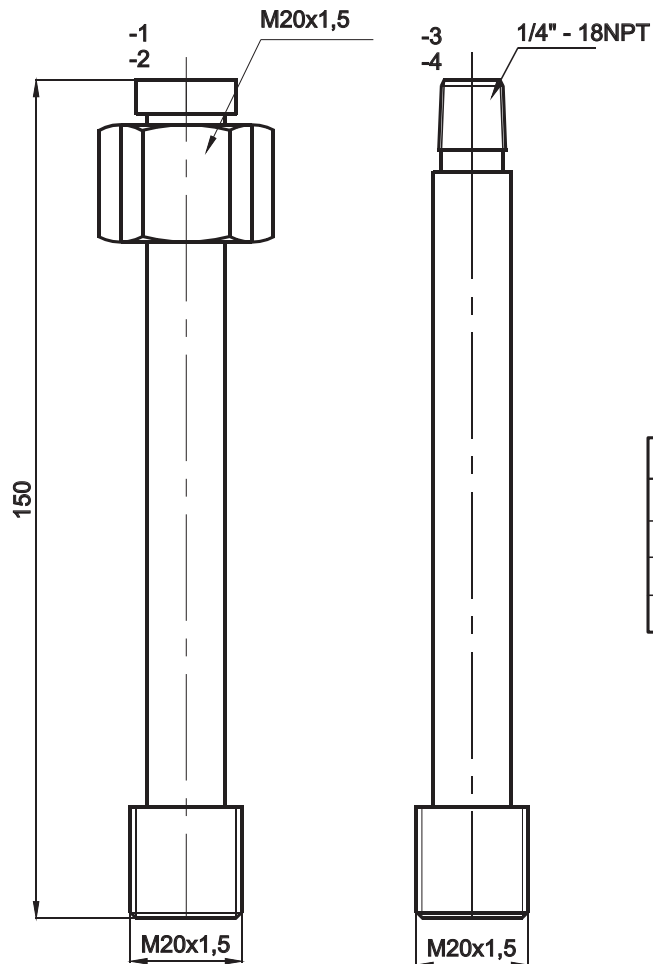
WASHER 18 / 6,5 / 2	
DRAWING No.	MATERIAL
ME1-0424-1	M1E
ME1-0424-2	316
ME1-0424-3	Tarflen

FLAT-END 14	
DRAWING No.	MATERIAL
ME1-0658-1	15 HM
ME1-0658-2	1H18N9T
ME1-0658-3	13 HMF
ME1-0658-4	316L

NUT M20x1,5	
DRAWING No.	MATERIAL
ME1-0657-1	15 HM
ME1-0657-2	1H18N9T
ME1-0657-3	13 HMF
ME1-0657-4	316L

4.7. Assembly ferrule

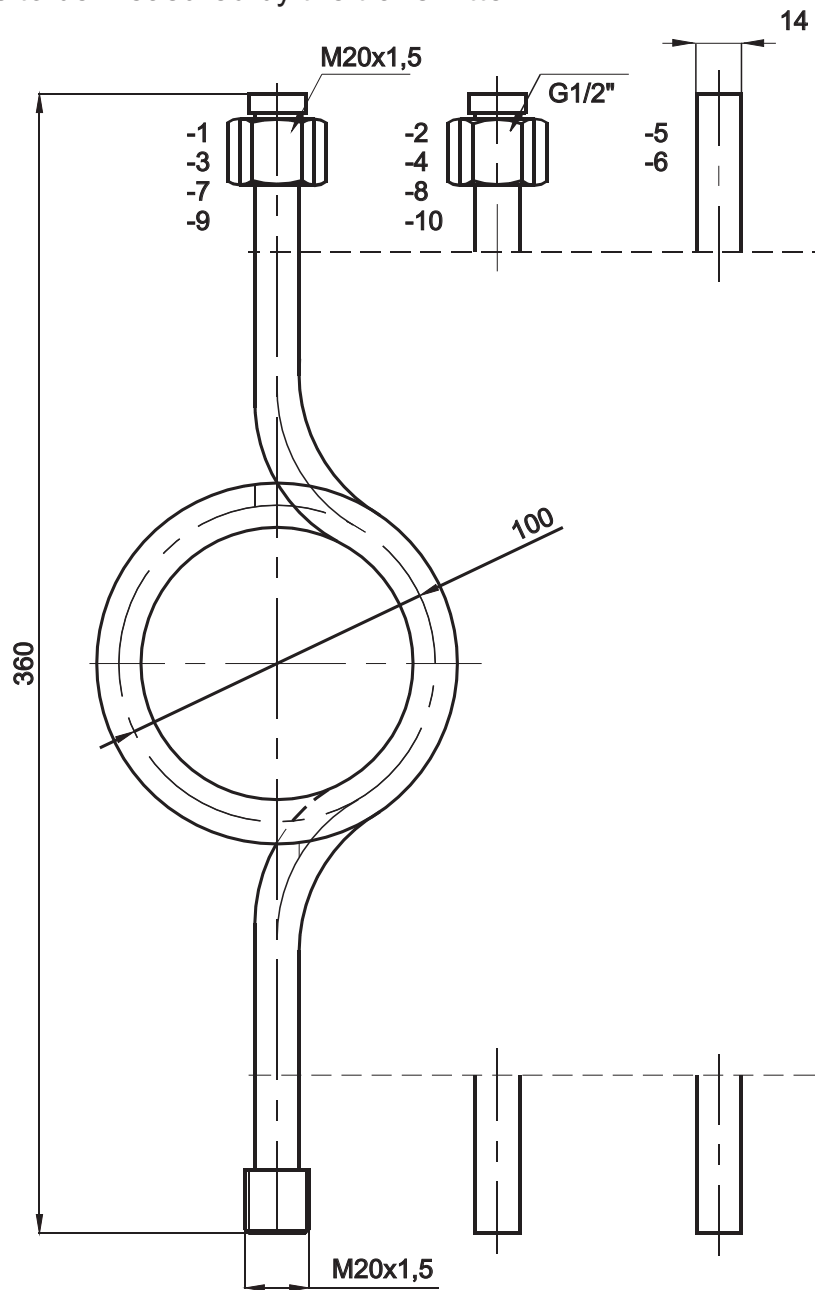
The assembly ferrule enables to connect transmitters or manometers with installation.



DRAWING No.	MATERIAL
ME2-0696-1	R35
ME2-0696-2	1H18N9T
ME2-0696-3	R35
ME2-0696-4	1H18N9T

4.8. Loop-and-syphon tube

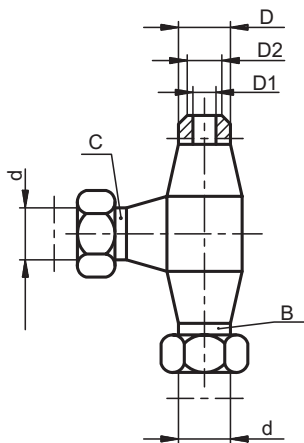
The loop-and-syphon tube is used in decrease medium temperature, which pressure has to be measured by the transmitter.



DRAWING No.	MATERIAL	GLAND
ME2-0697-1	R35	M20x1,5
ME2-0697-2	R35	G1/2"
ME2-0697-3	1H18N9T	M20x1,5
ME2-0697-4	1H18N9T	G1/2"
ME2-0697-5	R35	----
ME2-0697-6	1H18N9T	----

DRAWING No.	MATERIAL	GLAND
ME2-0697-7	R35	M20x1,5
ME2-0697-8	R35	G1/2"
ME2-0697-9	1H18N9T	M20x1,5
ME2-0697-10	1H18N9T	G1/2"

5. "T"- CONNECTIONS



D	10	13.5	16	18	25
D1	6	9	10	11	17
D2	8	10	12	14	20
d	12 ^{±0.08}	14 ^{±0.08}			

5.1. Straight T-connections

The straight T-connection is designed for connecting three impulse pipes by means of welding or self-locking rings.

The ends A, B, C can be made acc. to dimensions given in the table, in any combination. We can make the diameters different from those given in the table, upon special order. One should give the drawing no. and the ends dimensions when ordering, for e.g. ME1-0...-1

A = 10

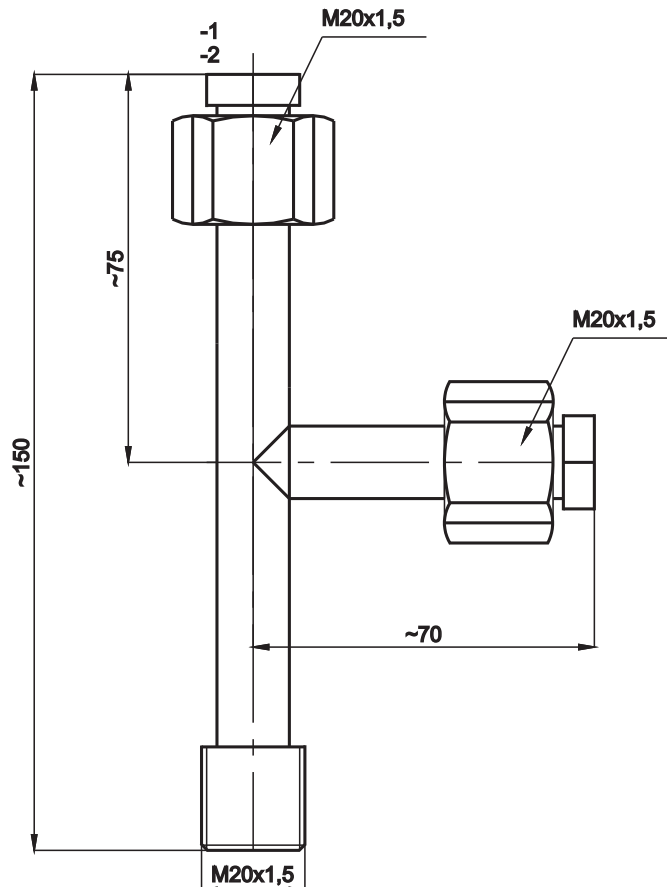
B = 18

C = 12^{±0.08}

Such order means that the T-connection will be made of material - 20, will have two welding ends of 10mm and 18mm dia and one end with self-locking ring of 12^{±0.08}

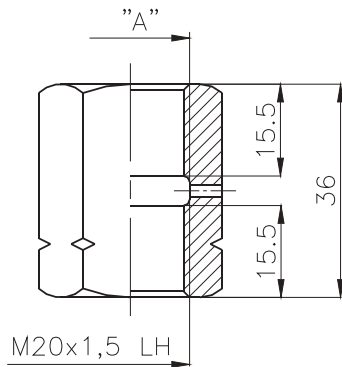
DRAWING No.	MATERIAL	DIMENSIONS OF A, B, C
ME2-0460-1	20	Have to be determine in the order - max. 25 dia
ME2-0460-2	15HM	
ME2-0460-3	10H2M	
ME2-0460-4	316	
ME2-0460-5	13HMF	

5.2. Straight T-connection



DRAWING No.	MATERIAL
ME2-0698-1	R35
ME2-0698-2	1H18N9T

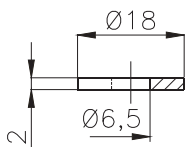
6. MANOMETRIC CONNECTION FOR VALVES (MANIFOLDS)



6.1. "Roman" nut

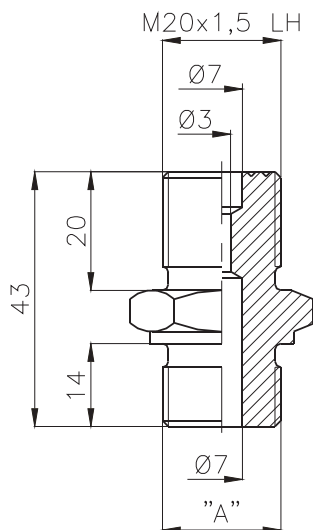
"Roman" nut enables to connection two manometric ends

DRAWING No.	DIMENSION "A"	MATERIAL
ME1-0421-1	M20 x 1,5	15HM
ME1-0421-2	M20 x 1,5	1H18N9T
ME1-0421-3	G1/2"	15HM
ME1-0421-4	G1/2"	1H18N9T
ME1-0421-5	R1/2"	15HM
ME1-0421-6	R1/2"	1H18N9T



6.2 Insert type ME1-0424

DRAWING No.	MATERIAL
ME1-0424-1	ME1Ez4
ME1-0424-2	1H18N9T
ME1-0424-3	TARFLEN



6.3 Manometric connection

Manometric connection enables to connect device with pressure instalation

DRAWING No.	MATERIAL	THREAD "A"
ME1-0706-1	15HM	M20x1,5
ME1-0706-2	1H18N9T	M20x1,5
ME1-0706-3	15HM	G1/2"
ME1-0706-4	1H18N9T	G1/2"
ME1-0706-5	15HM	R1/2"
ME1-0706-6	1H18N9T	R1/2"
ME1-0706-7	15HM	1/2"NPT
ME1-0706-8	1H18N9T	1/2"NPT

The right of introducing design changes in the product, without deteriorating of its operation parameters, is reserved.