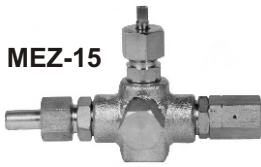
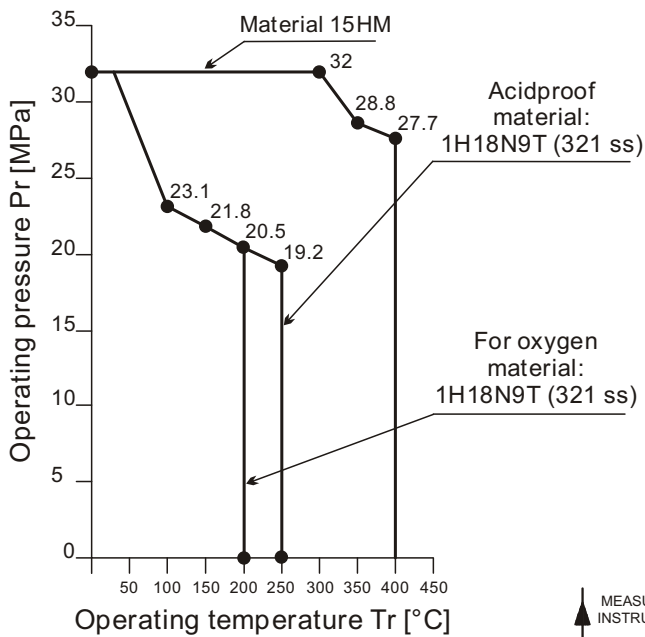


MANOMETRIC VALVES (MANIFOLDS) type MEZ-15, MEZ-15K, MEZ-15.1 and MEZ-15.2



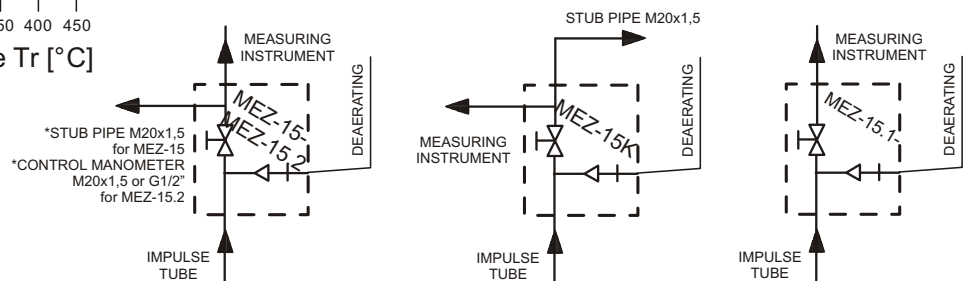
- high reliability
- different material versions for water, steam, acids and oxygen
- body material: 15HM or 1H18N9T (321ss)
- nominal pressure up to 32 MPa

Range of operating pressures versus operating temperature for valves (manifolds) type: MEZ-15, MEZ-15K, MEZ-15.1 and MEZ-15.2



The MEZ-type valves (manifolds) are designed for assembling in measurement & control systems to cut the measuring instrument. Nominal diameter of valves (manifolds) is Dn5. All types of valves (manifolds) have deaerating screw. MEZ-15 and MEZ-15k have manometric or impulse end on outlet (CODE2), the controll manometer side. MEZ-15.1 has manometric or impulse end on outlet (CODE2), but no controll manometer side. MEZ-15.2 has manometric or impulse end on outlet (CODE2), the controll manometer side (CODE5). The valves (manifolds) are provided by the manufacturer with setting key.

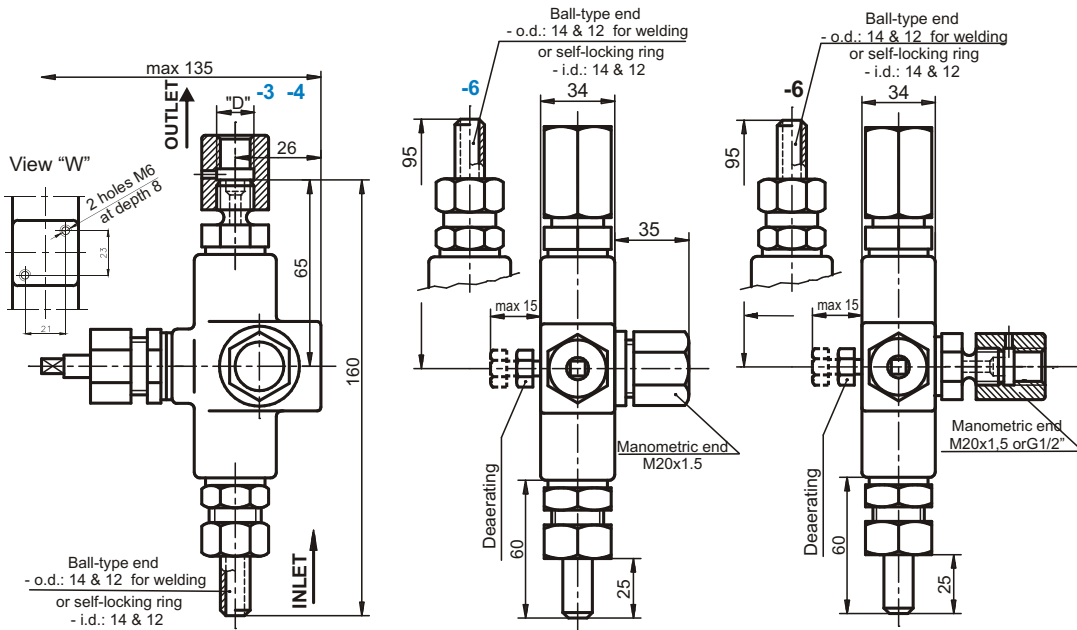
BLOCK DIAGRAMS



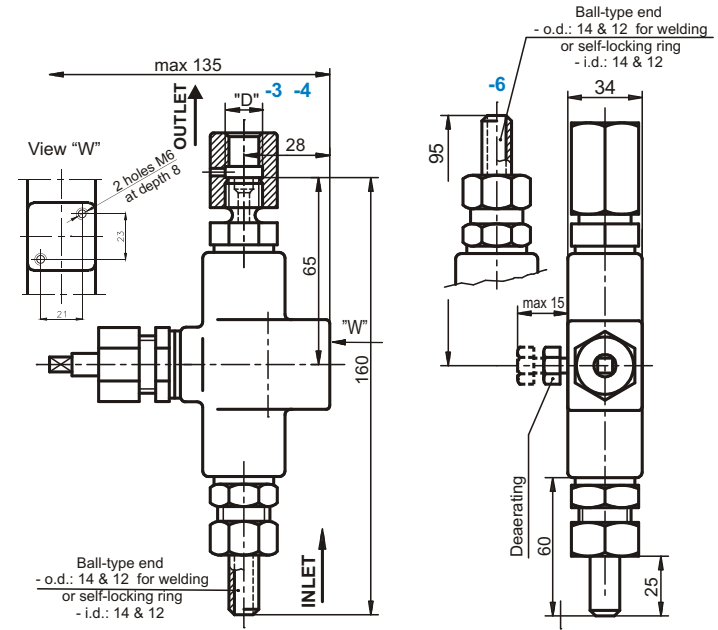
TECHNICAL DATA

Valve type	MEZ-15-00 MEZ-15K-00 MEZ-15.1-00 MEZ-15.2-00	MEZ-15-01 MEZ-15K-01 MEZ-15.1-01 MEZ-15.2-01	MEZ-15-03 MEZ-15K-03 MEZ-15.1-03 MEZ-15.2-03
Nominal diameter [mm]:	DN 5	DN 5	DN 5
Nominal pressure:	32 MPa	32 MPa	32 MPa
Test pressure:	45 MPa	45 MPa	45 MPa
Highest operating temperature:	400°C	250°C	200°C
Valve material:	steel 15HM	steel 1H18N9T (321 ss)	steel 1H18N9T (321 ss)
Valve sealing material:	graphite	graphite	tarflen
Valve version:	standard	acid-proof	for oxygen
Mass:	MEZ-15: 1.8 kg; MEZ-15k: 1.8 kg; MEZ-15.1: 1.5 kg; MEZ-15.2: 1.5 kg		

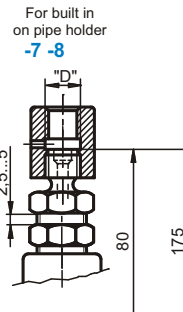
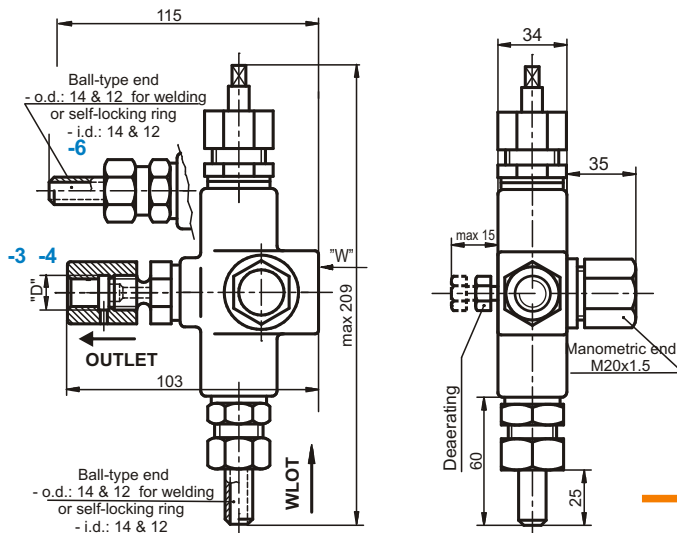
DIMENSIONED DRAWING of MEZ-15-XX/X-0-X and MEZ-15.2-XX/X-0-X



DIMENSIONED DRAWING of MEZ-15.1-XX/X-0-X

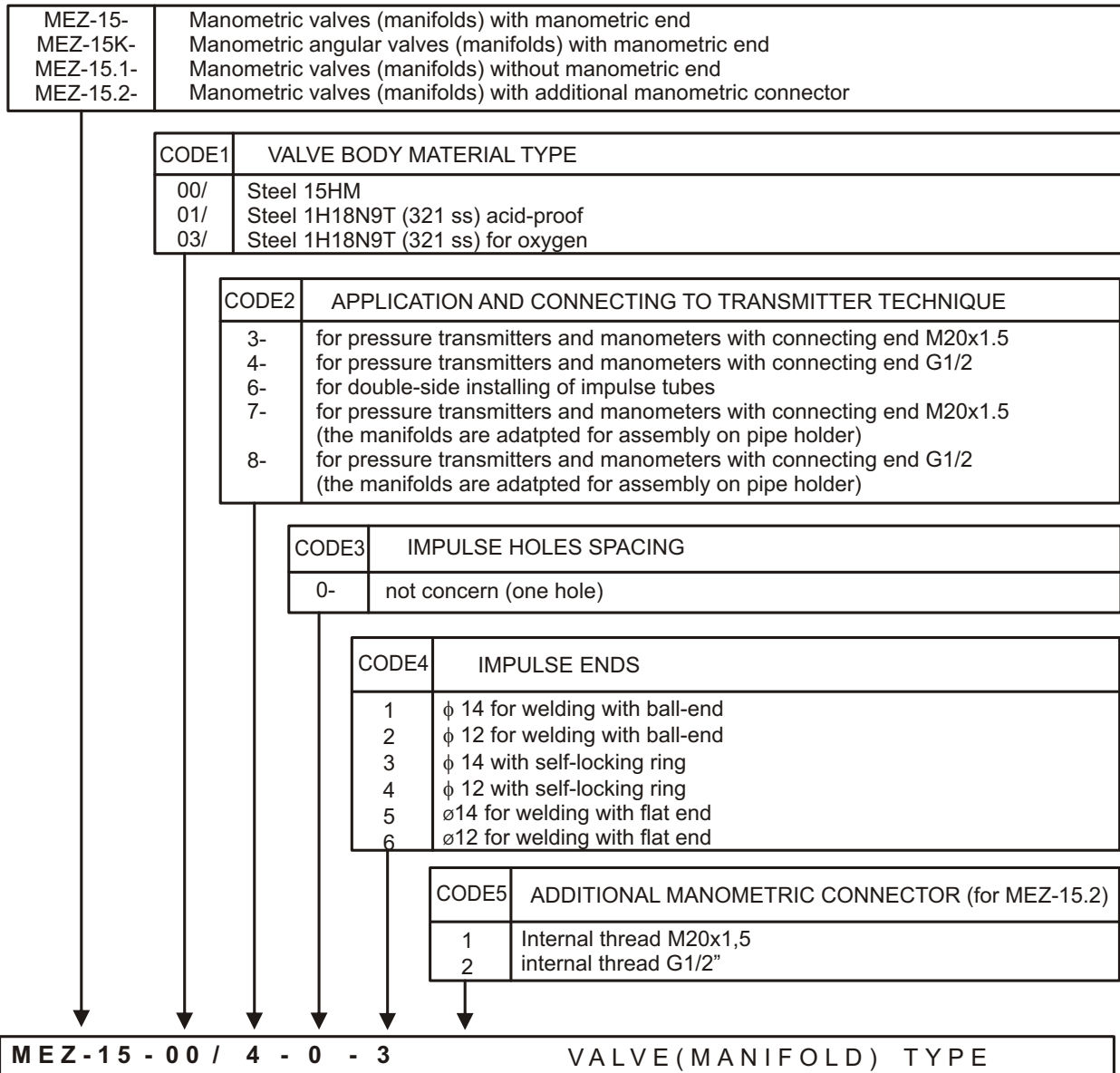


DIMENSIONED DRAWING of MEZ-15K-XX/X-0-X



CODE 2	Dimension "D"
-3, -7	M20 x 1.5
-4, -8	G1/2
-6	Ball-type end or self-locking ring

**ORDERING OF VALVES (MANIFOLDS)
type MEZ-15-, MEZ-15K, MEZ-15.1 and MEZ-15.2**



It is possible to make other versions of valves (namifolds) after agrteements with manufacturer:
 - with elongated glands (it has to be denoted in the order)
 - with ends for connect the valve (manifold) with instalation from material different as all valve (manifold)
IMPORTANT: all not standard client's withes have to be denoted in the order

The right of introducing design changes in the product, without deteriorating of its operation parameters, is reserved.