

	TECHNICAL PRODUCT DOCUMENTATION	MEZ-14 - DTR
		Page: 1 Pages: 10

BLOCK MANIFOLD (VALVE) **Type MEZ-14-00 and MEZ-14-02**

	TECHNICAL PRODUCT DOCUMENTATION	MEZ-14 - DTR
		Page: 2 Pages: 10

LIST OF CONTENTS:

1. INSTRUCTIONS AND WARNINGS	3
2. APPLICATION	3
3. TECHNICAL DATA	4
4. ORDERING AND CONDITIONS OF DELIVERY	4
5. ORDERING METHOD	5
6. MANUFACTURER'S DECLARATION	6
7. ENCLOSURES	7



	TECHNICAL PRODUCT DOCUMENTATION	MEZ-14 - DTR
		Page: 3 Pages: 10

1. INSTRUCTIONS AND WARNINGS

In case of not fulfilling the recommendations and warnings one can have serious body injuries, and/or serious material damages. The attendance personnel must be properly trained and acquainted with all the safety recommendations and warnings.

Reliable and safe operation of the valve is dependent of providing the proper transportation, storing, assembling and start-up.

The present Technical Product Documentation contains important remarks in the scope of safety which were denoted with the below shown pictograms:

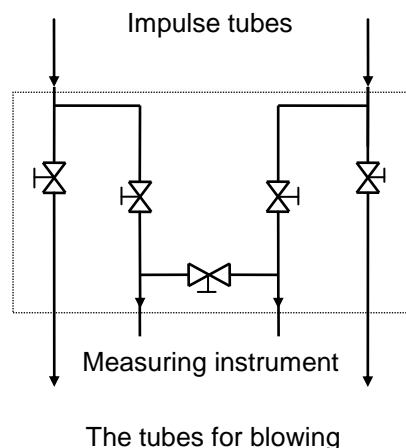
	<p>This sign means: Indicator</p> <p>This "Indicator" shows an operation or process being of essential importance for proper operation of the device. Material damages can occur in case of not observing this recommendation.</p>
	<p>This sign means: Warning</p> <p>This "Warning" shows an operation or process which in case of improper operation can cause danger to the attendance personnel or serious material damages.</p>

2. APPLICATION

Blocked manifolds (valves) are applied in the industrial automation Instrumentation&Controls systems. Blocked manifolds (valves) – depends of version – are used for directly assembly on transmitters made by H&B, ROSEMOUNT and others and for settlement with transmitters type EPA - after using proper connection pipes. Blocked manifold (valve) has five-way manifold (valve) function and the construction of this manifold (valve) is: three-way manifold (valve) and two special external blowing manifolds (valves).

Impulse tubes of this manifold (valve) are adapted for welding the pipes at external diameters 14 dia. or 12 dia. or equipped with self-clamping rings dia. or 12 dia. depends of version. The blocked manifold (valve) is equipped with setting key.

Block diagram



	TECHNICAL PRODUCT DOCUMENTATION	MEZ-14 - DTR
		Page: 4 Pages: 10

3. TECHNICAL DATA

Valve type	MEZ-14-00/X-X-X-1/X	MEZ-14-00/X-X-X-2/X	MEZ-14-02/X-X-X-3/X
Nominal diameter [mm]:	DN 5, DN 8	DN 5, DN 8	DN 5, DN 8
Nominal pressure:	32 Mpa	32 MPa	32 MPa
Test pressure:	45 MPa	45 MPa	45 MPa
Highest operating temperature:	400°C	520°C	560°C
Numerical values of permissible operating pressures, in function of nominal pressure and operating temperature, acc. to PN-89/H-02650:	acc. to graph	acc. to graph	acc. to graph
Valve material:	steel 15HM	steel 15HM	steel 13HMF
Valve sealing material:	graphite	graphite	graphite
Valve version:	standard	standard	standard
Mass:	7 kg	8 kg	8 kg

4. ORDERING AND CONDITIONS OF DELIVERY

The best way to get the manifolds (valves) is make the order directly at manufacturer use ordering method (point 5 at this documentation).

Example denotation: MEZ-14-00/1-1-1-1/A

The delivery consists of the following elements:

- | | |
|--|---------|
| 1. Complete manifold (valve) MEZ-14- | 1 pc |
| 2. Key, complete, drawing no. ME2-0153 | 1 pc |
| 3. spindle-seal ϕ 15/ ϕ 9x6 | 6 pcs. |
| 4. spindle-seal ϕ 20/ ϕ 12x8 | 10 pcs. |
| 5. manifold's (valve's) seal ϕ 25/ ϕ 17,8x3,5 drawing no. ME1 – 0148 | 2 pcs. |
| 6. screw 7/16" - 20 UNF x 60 drawing no. ME1 – 0369-1 | 4 pcs. |
| 7. tubes for connection the EPA transmitter with manifold (valve) | 1 set |
| 8. Technical Product Documentation | 1 pc |
| 9. Guarantee Card and Acceptance Certificate type 3.1 | 1 pc |
- position no. 3 and 4 are delivered on separate order
 - position no. 5 and 5 acc. to version MEZ-14-XX/1-X-X-X/X only
 - position no. 7 acc. to version MEZ-14-XX/2-1-X-X/X and this is delivered on separate order



For transmitters type EPA-07 and -08 one should be ordered the set of tubs acc. to drawing no. ME2-0366-2, for other types of transmitter one should be ordered the set of tubs acc. to drawing no. ME2-0366-1.

The manifold (valve) is delivered in the cardboard packing (1 piece in one boxboard).

5. ORDERING METHOD

MEZ-14-	Blocked valves (manifolds)	
CODE1	VALVE BODY MATERIAL TYPE	
00/*	Steel 15HM	
02/	Steel 13HMF (elongated gland)	
CODE2	APPLICATION AND CONNECTING TO TRANSMITTER	
1-	for direct assembly to transmitter	
2-	for assembly by impulse tubes to transmitter	
CODE3	IMPULSE HOLES SPACING	
1-	L = 54 mm	
2-	special version after agreement with manufacturer	
CODE4	IMPULSE DRAIN TUBE	
1	φ 14 for welding with ball-end	
2	φ 12 for welding with ball-end	
3	φ 14 with self-locking ring	
4	φ 12 with self-locking ring	
5	ø14 for welding with flat end	
6	ø12 for welding with flat end	
CODE5	HIGHEST OPERATING TEMPERATURE	
1	400°C	
2	520°C	
3	560°C	
CODE6	ASSEMBLY SCREWS	
/S	Standard screws 7/16"x55	
/A	screws M10x55 for assembly with APLISENS transmitters	
MEZ - 14 - 00 / 1 - 1 - 3 - 1 - A VALVE TYPE		

* It is possible to make valves (manifolds) with:

- elongated glands (it has to be denoted in the order)
- ends for connect the valve (manifold) with installation from material different as all valve (manifold)
 - it has to be denoted in the order after agreement with manufacturer

	TECHNICAL PRODUCT DOCUMENTATION	MEZ-14 - DTR
		Page: 6 Pages: 10

6. MANUFACTURER'S DECLARATION



CONTROLMATICA ZAP-PNEFAL Sp. z o. o.
ul. Krotoszyńska 35
63-400 Ostrów Wielkopolski
www.controlmatica.com.pl



Ostrów Wielkopolski, 10 października 2008r.

OŚWIADCZENIE PRODUCENTA

Oświadczamy, że wyroby MEZ – 10 ÷ 25 spełniają wymagania dyrektywy „Urządzenia Ciśnieniowe” 97/23/WE według art. 3 ust. 3.

Są wykonane zgodnie z uznaną praktyką inżynierską i nie podlegają oznaczeniu CE.

Stosowane jako osprzęt ciśnieniowy zbiorników do gazów zaliczanych do płynów grupy 1 (klasyfikacja wg dyrektywy) mają ograniczenie ciśnienia do 20MPa.

KIEROWNIK
DZIAŁU TECHNICZNEGO
[illegible signature]
mgr inż. Krzysztof Idzior

PREZES ZARZĄDU
[illegible signature]
Sebastian Moch

Ostrów Wielkopolski, on 10th October 2008

PRODUCER'S DECLARATION

We declare that the products type MEZ-10...25, meet the requirements of the EU Directive „Pressure-type Equipment” no. 97/23/WE, according to Article 3, section 3.

These products are made with the acknowledged engineering practice and are not subject to the CE marking.

These products are used as the pressure accessories of tanks for gases included into the Group 1 liquids (classification acc. to the a. m. Directive) and have pressure limitation up to 20 MPa.

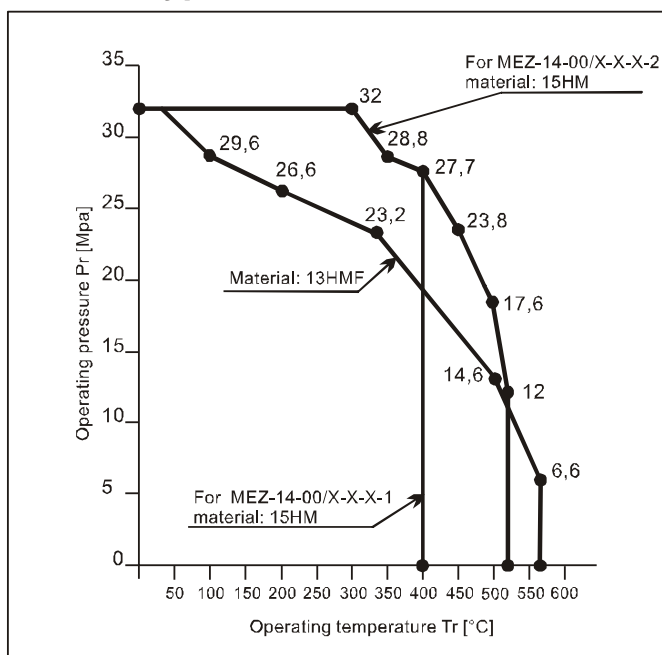
Signed by:
Technical Dept. Manager
(-) illegible signature
mgr inż. Krzysztof Idzior

Signed by:
President of the Board
(-) illegible signature
Sebastian Moch

7. ENCLOSURES

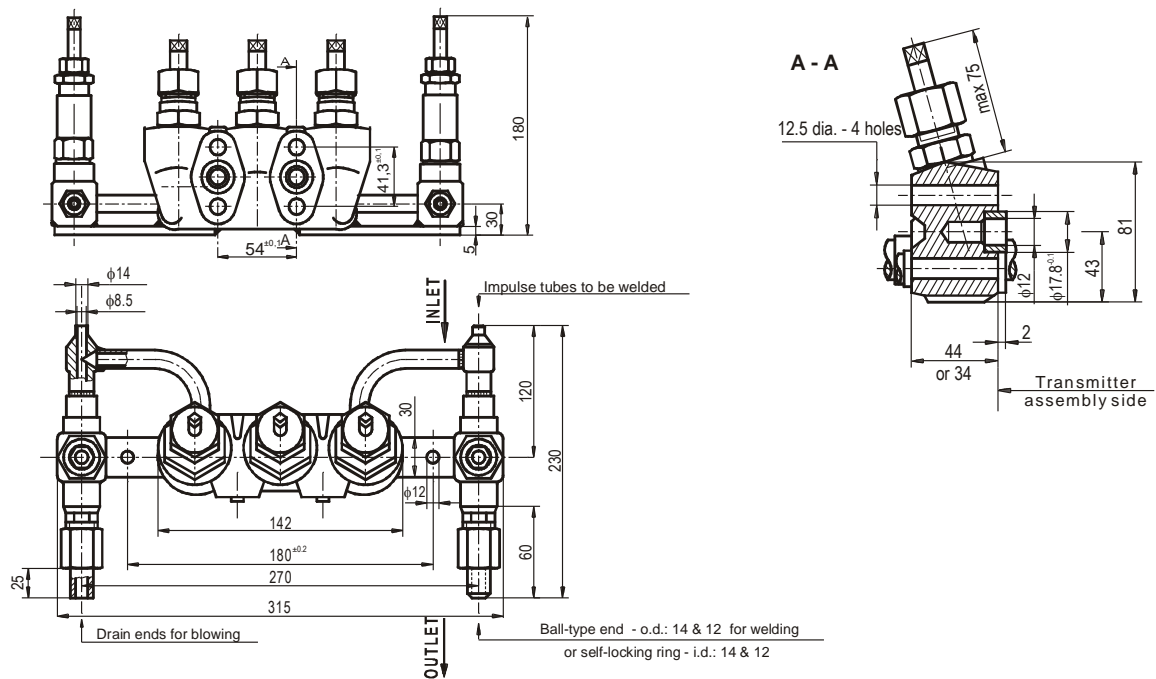
ENCLOSURE NO. 1

Range of operating pressures versus operating temperature
for valves type: MEZ-14-00 and MEZ-14-02

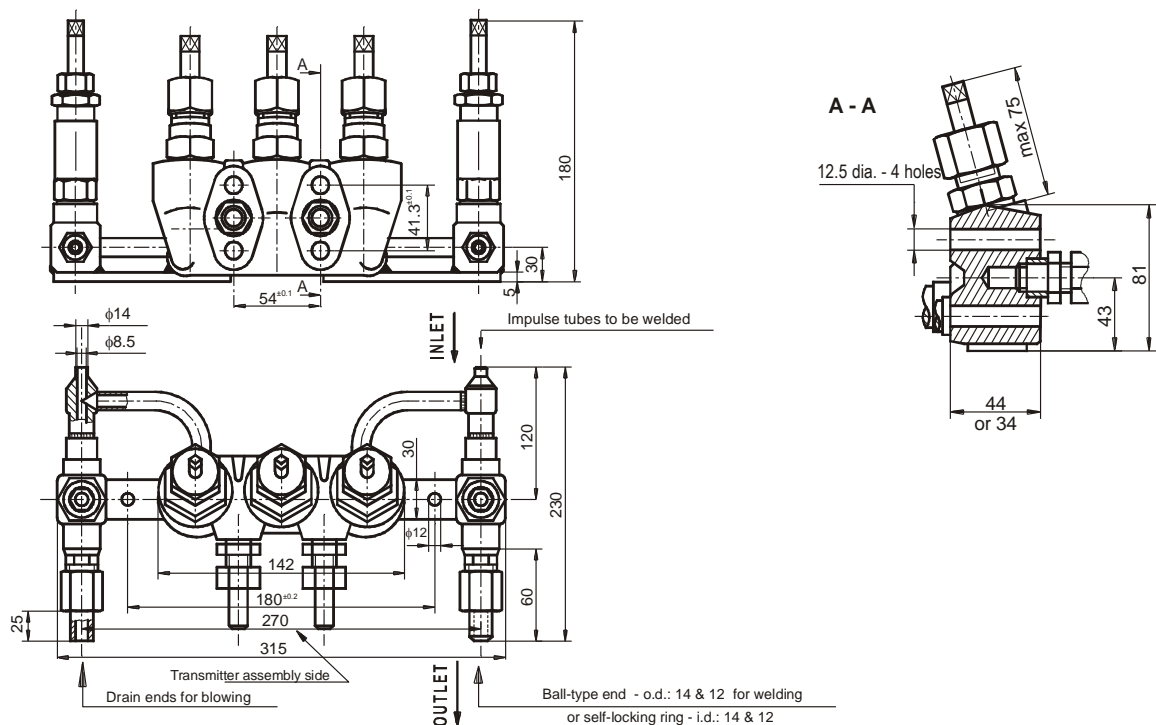


ENCLOSURE NO. 2

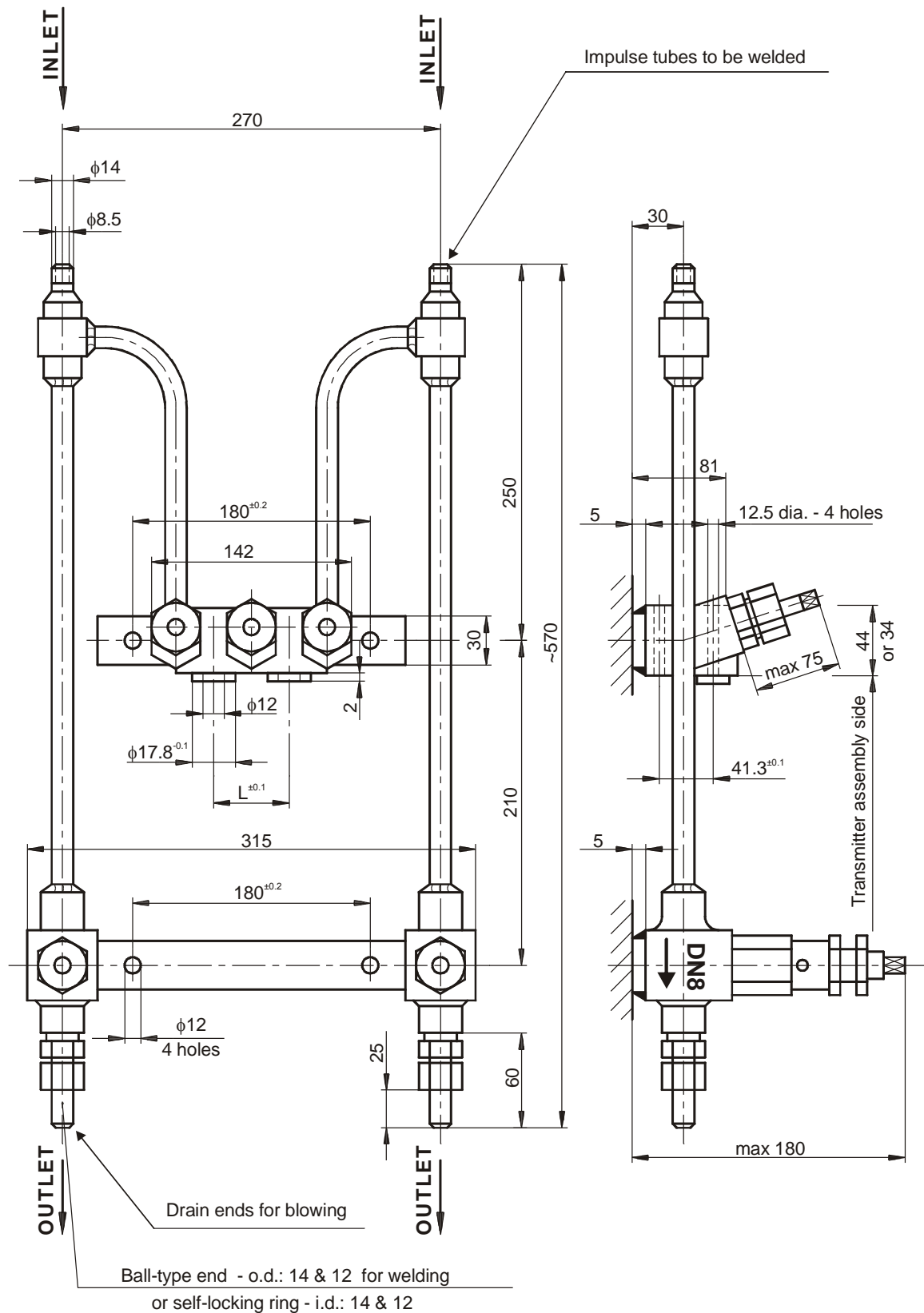
MEZ-14-00/1-X-X-1/X DIMENSIONED DRAWINGS



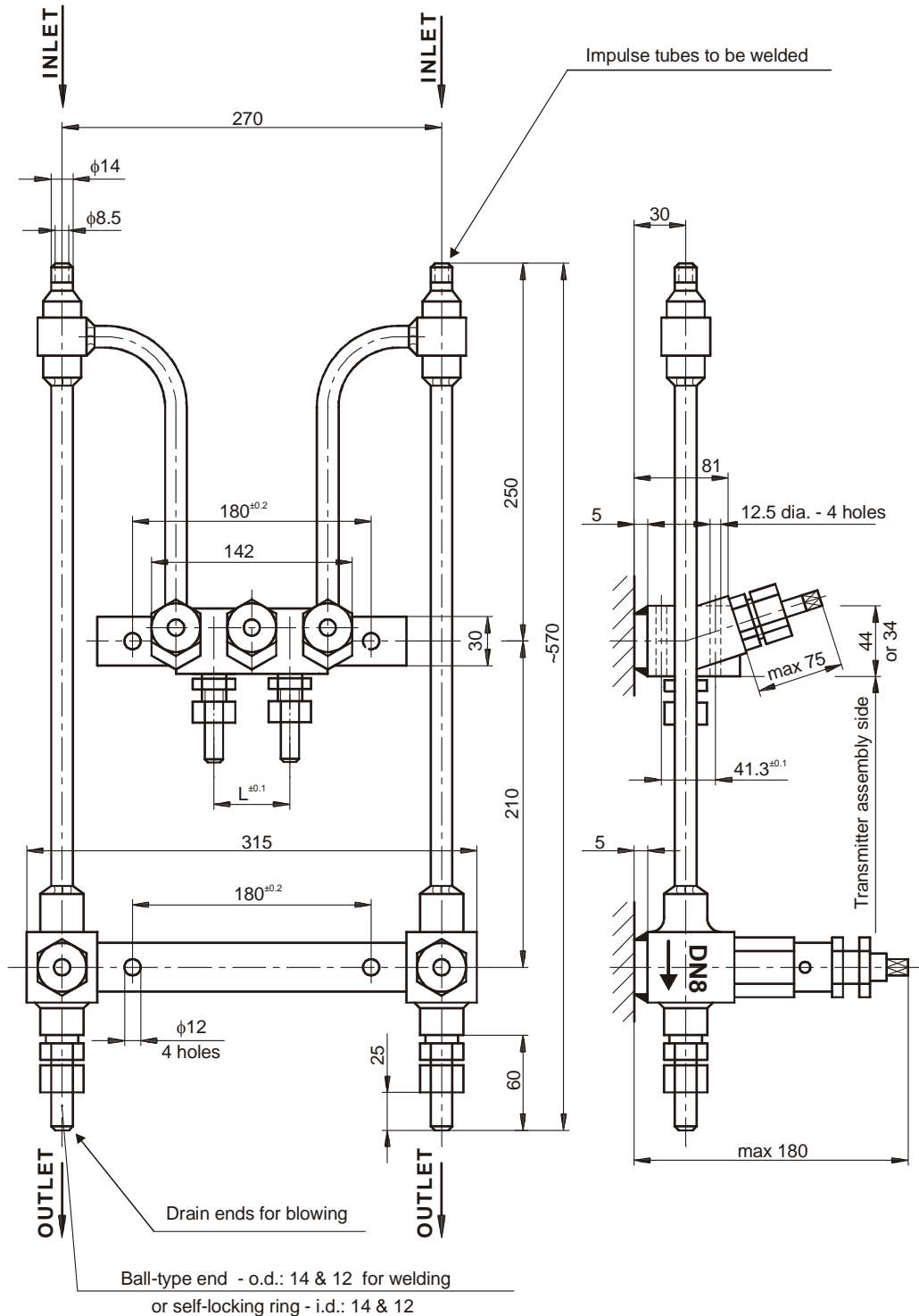
MEZ-14-00/2-1-X-1/X DIMENSIONED DRAWINGS



DIMENSIONED DRAWINGS OF MEZ-14-00/1-X-X-2/X and MEZ-14-02/1-X-X-3/X



DIMENSIONED DRAWINGS OD MEZ-14-00/2-X-X-2/X and MEZ-14-02/2-X-X-3/X



CONTROLMATICA ZAP-PNEFAL Sp. z o.o.

ul. Krotoszynska 35; PL-63-400 Ostrow Wlkp., Poland

tel.: +48627372250, fax: +48627372724, controlmatica@controlmatica.com.pl

www.controlmatica.com.pl